

# The Kent Compendium of Historic Parks and Gardens for Dover



## The Pines, St Margaret's Bay



December 2017



# **The Pines**

## St Margaret's Bay, Dover, Kent

---

### **TABLE OF CONTENTS**

**INTRODUCTION**

**STATEMENT OF SIGNIFICANCE**

**SUMMARY OF HISTORIC INTEREST**

**CHRONOLOGY OF THE HISTORIC DEVELOPMENT**

**SITE DESCRIPTION**

**LIST OF FIGURES**

FIGURE 1: Boundary map

FIGURE 2: Aerial Photograph (2012)

FIGURE 3: Ordnance Survey 4th edition 25" map (1929-1952)

FIGURE 4: The Pines, looking north towards the white cliffs (2017)

FIGURE 5: The Pines, The Calyx (2017)

FIGURE 6: The Pines, Entrance (2017)

FIGURE 7: The Pines, Pool and Rockwork (2017)

FIGURE 8: The Pines, sculpture of Churchill looking north (2017)



## INTRODUCTION

This site description and accompanying dossier have been prepared by the Kent Gardens Trust as part of its wider review of ***The Kent Compendium of Historic Parks and Gardens***. This part of the review was carried out for Dover District Council (DDC) from 2015-2017 and covers sites within the Dover local authority area. The reports detail the historic nature, content, current state and significance of the sites currently identified in the ***Kent Compendium of Historic Parks and Gardens*** for the Dover local authority area along with others identified by DDC.

### ***Dover District Heritage Strategy.***

The Dover District Heritage Strategy 2013 (DDHS) seeks to ensure that heritage plays a clear role in shaping any future regeneration, development and management decisions. To achieve this aim the DDHS contains a series of recommendations intended to promote and enhance the protection and enjoyment of the Districts heritage assets. A heritage asset is defined as a “building, monument, site, place, area or landscape identified as having a degree of significance meriting consideration in planning decisions, because of its heritage interest. Heritage asset includes designated heritage assets and assets identified by the local planning authority (including local listing)”<sup>1</sup>.

The review carried out by the Kent Gardens Trust supports the following DDHS recommendations:

- *Recommendation 9: Systems should be put in place to ensure that historic environment information and advice is readily accessible to local communities to help them shape the places in which they live.*
- *Recommendation 14: a Local List of Heritage Assets should be developed...gardens identified within the Kent Gardens Compendium and any enhancement of the Compendium should be included in the Local List.*
- *Recommendation 23: Opportunities should be sought and support given to local communities, groups and individuals in researching their past, develop projects with them that identify, enhance understanding of the Districts heritage assets and involve them in condition assessment, monitoring, management, promotion and interpretation of the assets:*

### ***How was the review carried out?***

The review has been undertaken using Historic England’s criteria for identifying the significance of local heritage assets to provide a consistent approach<sup>2</sup>. A template for the reports was developed by DDC, building on the experience of previous work by the Kent Gardens Trust. The heritage values of the historic

---

<sup>1</sup> National Planning Policy Framework 2012

<sup>2</sup> Historic England “Conservation Principles: Policy and Guidance” 2008

park or garden subject to the report are defined within the Statement of Significance.

The extent of the area identified represents the current surviving area of the designed landscape, the boundary line generally reflecting the maximum extent of the historic gardens or parkland (although there are exceptions such as where land has been irreversibly lost to development). The boundary line takes no account of current ownership.

### ***How will the reports be used?***

- a) The revised list of sites has the potential to support development of a Local List<sup>3</sup> of Heritage Assets in Dover, should the Council progress with the recommendation in the DDHS in the future. The list of sites researched and evaluated in this review would be subject to consultation as part of any Local List development and is therefore not intended to be final.
- b) In response to recommendation 9 of the DDHS, the reports will be made publically available both on the DDC website and to the Historic Environment Record held by Kent County Council.
- c) The reports will help to inform future funding applications for historic spaces by the identification of significance.
- d) The review will help to inform future policy making, conservation and/or any development of sites, and contribute to the understanding, and where possible enjoyment, of these heritage assets by the identification of the significance of key historic character, features and association including that of setting and viewpoints.

Further information is available from the contacts listed below. The partnership would like to thank the volunteers and owners who have participated in this project and given so much of their time, effort and hospitality to complete this challenging and rewarding task.

Dover District Council  
White Cliffs Business Park  
Dover  
CT16 3PJ  
[www.dover.gov.uk](http://www.dover.gov.uk)

Kent County Council  
Heritage Conservation  
Invicta House  
County Hall  
Maidstone  
ME14 1XX  
[www.kent.gov.uk](http://www.kent.gov.uk)

Kent Gardens Trust  
[www.kentgardenstrust.org.uk](http://www.kentgardenstrust.org.uk)

---

<sup>3</sup> Historic England "Local Heritage Listing": Historic England Advice Note 7 2016



**KENT  
ST. MARGARET'S BAY  
DOVER**

**THE PINES GARDENS**

**TR 3660 4419**

## **STATEMENT OF SIGNIFICANCE**

### **HISTORICAL**

The Pines Garden is situated on the chalk cliffs near Dover, an area which has for centuries played an important part in the defence of the country. There are several listed structures close to the garden which date from the Revolutionary and Napoleonic wars and World War II. A sculpture of Winston Churchill in the garden commemorates World War II and a museum is close by.

It is fitting that the gardens which were created 25 years after the end of the war were the work of a man, Fred Cleary, whose vision was to create peaceful green spaces from bomb sites in London after the war. He was well known for his work in promoting gardens and parks in cities and for his interest in nature conservation. A public garden in the City of London has been named after him. Fred Cleary created the garden at The Pines as a public space.

### **AESTHETIC**

The garden is positioned in a sheltered hollow in the chalk downs which allows a variety of tender and unusual plants and trees to flourish. It is attractively designed and includes a lake, a poetry path, a productive and well ordered vegetable and fruit garden and a sensory garden. The garden contains the Pines Calyx, an award winning conference centre built of rammed chalk, the innovative design of which allows it to be completely sustainable and carbon neutral.

### **COMMUNAL**

The garden is open to the public and is well used. A number of educational activities take place in the garden and children are encouraged to learn about the natural world and gardening in harmony with nature. The historical dimension is reinforced by a bronze statue of Winston Churchill the great war leader who knew Fred Cleary.

### **EVIDENTIAL**

The recent history of The Pines Garden provides a good example of contemporary concerns about the environment in the first two decades of the 21<sup>st</sup> century. The garden is run organically with a strong emphasis on working with nature. A number of modern techniques are employed to minimize the impact on the environment including the use of reed beds to purify water, using composting and recycling in the garden and the Calyx building is carbon neutral and uses only natural materials.



The nearby museum and wartime garden provide a record of life in the area during World War II.

## **SUMMARY OF HISTORIC INTEREST**

An informally laid out garden, open to the public, created in 1971 by Fred Cleary to demonstrate sustainable and organic methods of horticulture, and to provide a place of peace and beauty. The wider area in which the garden lies has long been associated with the defence of the country.

## **CHRONOLOGY OF THE HISTORIC DEVELOPMENT**

The Pines Garden is situated in, an area which was unimproved downland until the 1920s. During the Seven Years War (1756 – 1764) and the Revolutionary and Napoleonic Wars (1798 – 1815) the area around Dover was important for defence against invasion and the sheltered site close to the coast was used as barracks to house detachments of cavalry and infantry. The name Barracks Bottom given to the site on the 1<sup>st</sup> edition OS map (1862 – 1875) and the nearby guard house are relics of those times.

Development of the area above the cliffs to the north-east of the Garden commenced in the last decade of the C19 when the railway was extended to Deal. Land around the small village of St. Margaret's At Cliffe, which in 1800 had only 28 households, was sold by the executors of Lord Granville (1815 – 1891), a substantial local landowner, to the St. Margaret's Bay Land Company and St. Margaret's Road and Beach Road were constructed by 1929. The 4<sup>th</sup> edition OS map (1929 – 1952) shows a number of substantial houses to have been built along St. Margaret's Road on the west side of the future Garden including one called The Pines towards the north end of St. Margaret's Road. The triangular area between St. Margaret's Road to the north and Beach Road to the south appears from the 4<sup>th</sup> edition OS map to have formed the garden of The Pines. This is confirmed by a 1959 Land Registry Plan which shows the southern boundary of the Pines Garden lined with trees and running south of the house from St. Margaret's Road south east to Beach Road. It seems likely that this area and the three building plots on the south west side of the present garden adjoining The Crescent and Beach Road shown on the 4<sup>th</sup> edition OS map would also have been built on if the ambitious plans of the company had come to fruition. The economic downturn during and after the First World War may have contributed to the failure of the St. Margaret's Bay Land Company which was wound up insolvent in 1929. A number of houses were built in the vicinity of the Garden in the subsequent period but the area which is now The Pines Garden remained undeveloped until it was bought in 1971 by Fred Cleary (1905 - 1984), the founder of Haslemere Estates a substantial property company. Cleary established the Garden in order to demonstrate to the public sustainable and organic methods of horticulture and provide a place of peace and beauty for its visitors.

Fred Cleary was a notable philanthropist who, in the 1950s, established the Cleary Foundation, a charity devoted to promoting the arts, conservation and the

natural environment. He was responsible for buying derelict bomb sites in London after World War II and converting them into green spaces for public benefit. For this reason he was known as 'Flowering Fred' and was awarded the CBE. A garden near St. Paul's Cathedral was created in his memory and named after him.

Since Fred Cleary's death The Pines Garden have been managed by the Bay Trust, a registered charity with educational and environmental purposes. The informal layout with a lake and many mature trees is managed organically and with natural sustainable methods.

## **LOCATION, AREA, BOUNDARIES, LANDFORM, SETTING**

The Pines Garden is situated approximately 0.25km south of St. Margaret's Bay, 0.5km south-east of St. Margaret's At Cliffe and 4km north-east of Dover. The 2.4 ha Garden occupies a shallow sheltered valley which runs south-west from St. Margaret's Bay, between the chalk cliffs which rise sharply on the north-west side and drop down to the sea to the south-east. The site is bordered to the north-west by St. Margaret's Road and private gardens; to the east by Beach Road; and to the south and south-west by The Crescent linking these two public roads.

## **ENTRANCES AND APPROACHES**

The entrance to The Pines Garden is from the north end of Beach Road through iron gates into a stone paved area bounded on the north-east side by a low retaining wall containing two small linked pools. Beyond this steps lead up to a single story C20 building housing the offices of the Bay Trust which manages the Garden. A wooden gate on the south side of the paved area leads through to the garden.

## **GARDEN AND PLEASURE GROUNDS**

Immediately to the north of the entrance gate is a small area of shrubs and herbaceous planting through which winds a narrow gravel path. This area is known as The Poetry Path and poems are inscribed on wooden lecterns along the path. Close to the south side of the entrance gate is a circular brick paved area covered in summer with a Yurt structure with seating for the use of the Garden's Tea Room which stands immediately across Beach Road. A short distance beyond the paved area is a brick and flint raised flower-bed. A winding paved path leads south from the entrance through open grass to a bridge over a large pool which lies across the centre of the garden. On the south side of the pool on a mound stands a bronze statue of Winston Churchill by Oscar Nemon (Churchill was acquainted with Cleary), and from this point looking north there is a glimpse of the white cliffs of St. Margaret's Bay and the sea beyond.

On the south-east side of the garden are a series of small pools with substantial rock work creating an informal cascade falling into the main pool. A pond is shown on the 4<sup>th</sup> edition OS map and on the 1959 Land Registry Plan a little further north in the garden of The Pines which may subsequently have been incorporated into this water feature. Beyond the pool a mown grass labyrinth has

been created and in the far southern corner of the garden a reed bed system has been installed to purify water for use in the Garden and the Pines Calyx conference centre. The south-west corner of the garden is used to grow vegetables organically in raised beds. Nearby a curious and interesting feature has been created by placing the rescued façade of a demolished C17 London building horizontally in the ground and using the apertures as small flower beds.

Numerous mature trees stand informally arranged in the open grass throughout the garden and substantial shrubs screen the south-east boundary and some may have formed part of the boundary screen for the garden prior to its purchase by Fred Cleary. A rare Montezuma Pine (*pinus montezumae*) stands close to the entrance to the gardens.

The Pines Garden has been managed organically since 2001.

## **PRINCIPAL BUILDINGS AND STRUCTURES**

The Pines Calyx conference centre stands close to the north-east boundary approximately 50 m to the north of the entrance and is built of rammed chalk using innovative modern systems of design and construction and sustainable methods of providing heat and energy. Two connected roundels form the structure each of which has a domed turf roof. The building has won several architectural and environmental awards.

## **REFERENCES**

### **Maps:**

OS 1<sup>st</sup> Edition 25" map (1862-1875)  
OS 2<sup>nd</sup> Edition 25" map (1897-1900)  
OS 3<sup>rd</sup> Edition 25" map (1907-1923)  
OS 4<sup>th</sup> Edition 25" map (1929-1952)  
H.M. Land registry Filed Plan dated November 1959

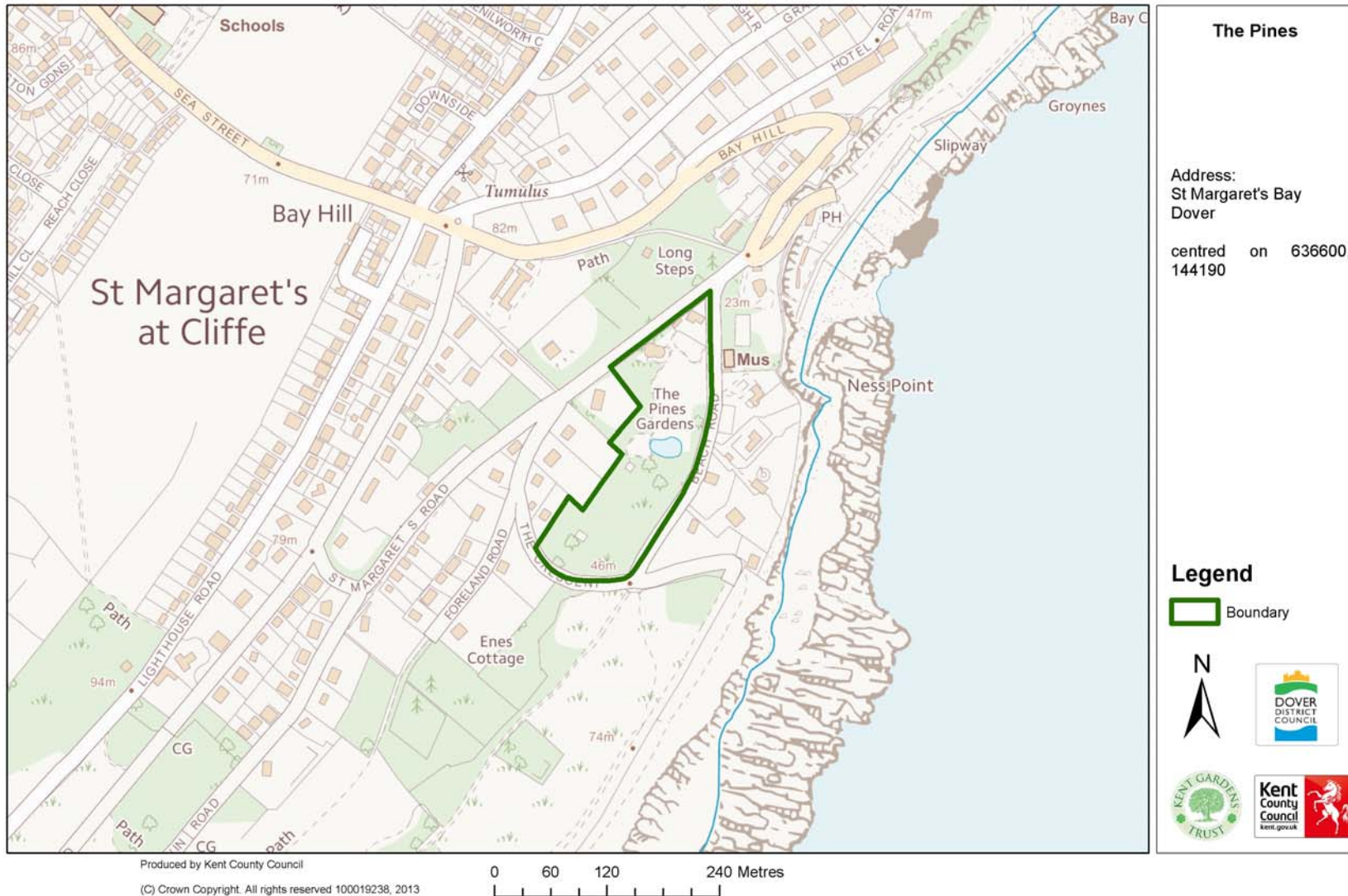
### **Books, articles:**

Macfie A.L. Land Speculation in St. Margaret's At Cliffe 1881-1954 *Journal of Kent Local History* No 23, September 1986  
The Pines Garden brochure 2017  
[LondonRemembers.com/memorials/fred-cleary](http://LondonRemembers.com/memorials/fred-cleary)

**Researched by Rosemary Dymond**  
**Description written by Elizabeth Cairns**  
**Harriet Jordan (editor)**

# Kent Compendium of Historic Parks & Gardens – 2015-2017 review of Dover District

## Fig. 1 Boundary map



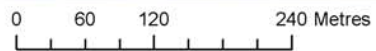
# Kent Compendium of Historic Parks & Gardens – 2015-2017 review of Dover District

Fig. 2 Aerial photo (2012)



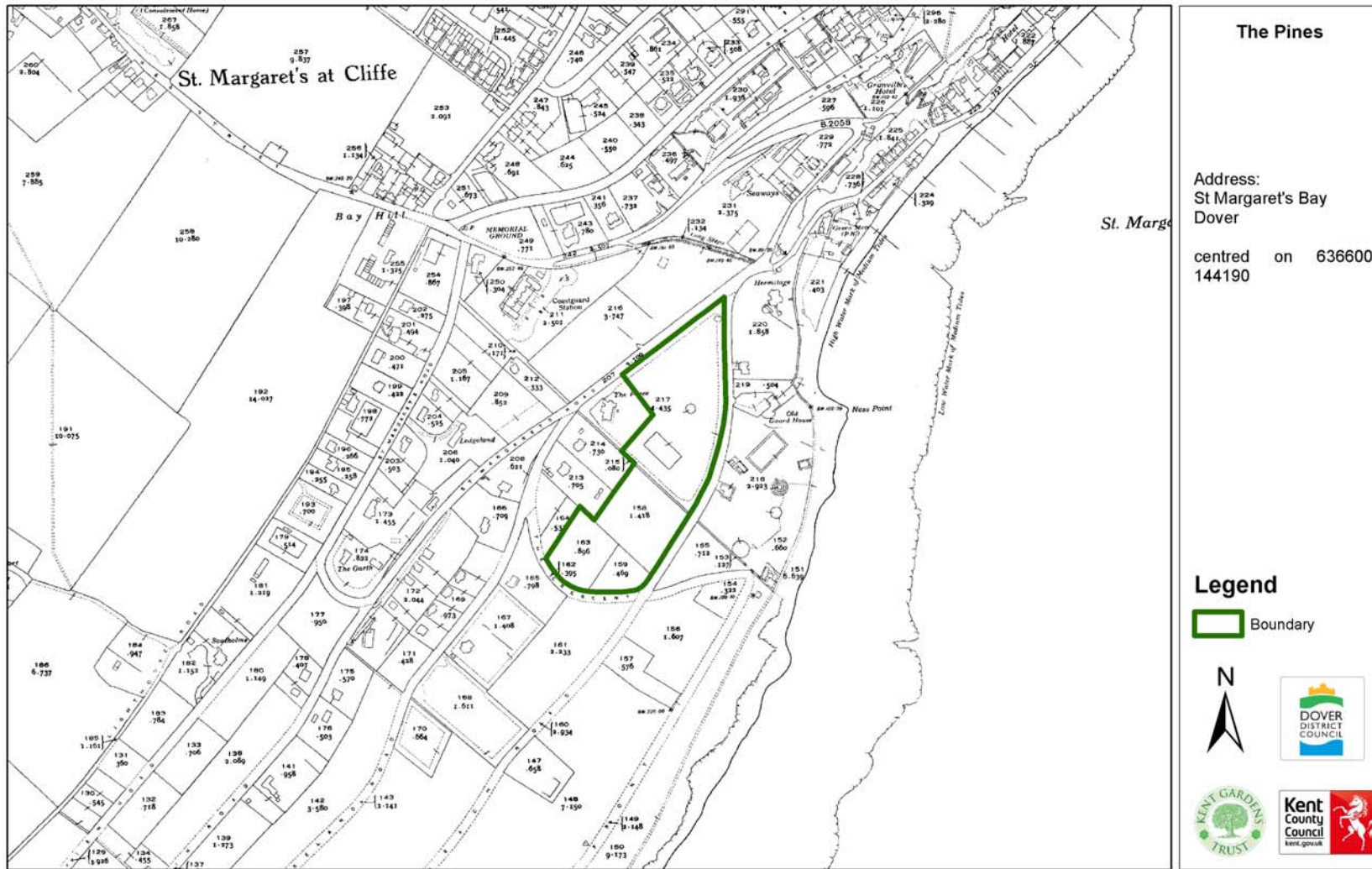
Produced by Kent County Council

(C) Crown Copyright. All rights reserved 100019238, 2013



# Kent Compendium of Historic Parks & Gardens – 2015-2017 review of Dover District

## Fig. 3 Ordnance Survey 4th edition 25” map (1929-1952)



**The Pines**

Address:  
St Margaret's Bay  
Dover

centred on 636600,  
144190

**Legend**

 Boundary



Produced by Kent County Council

(C) Crown Copyright. All rights reserved 100019238, 2013



**Kent Compendium of Historic Parks & Gardens – 2015-2017 review of Dover District**

**Fig. 4 The Pines, looking north towards the white cliffs (2017)**



**Kent Compendium of Historic Parks & Gardens – 2015-2017 review of Dover District**

**Fig. 5 The Pines, The Calyx (2017)**





**Kent Compendium of Historic Parks & Gardens – 2015-2017 review of Dover District**

**Fig. 6 The Pines, Entrance (2017)**



**Kent Compendium of Historic Parks & Gardens – 2015-2017 review of Dover District**

**Fig. 7 The Pines, Pool and Rockwork (2017)**



**Kent Compendium of Historic Parks & Gardens – 2015-2017 review of Dover District**

**Fig. 8 The Pines, sculpture of Churchill looking north (2017)**

